

C O N T R A C T D I V I S I O N

MODULNOVA

CONTRACT DIVISION

The Modulnova Contract division is an exclusive service dedicated to professionals in the contract world.

Each project is tailor-made with the company's distinctive passion and dedication. Know how, design uniqueness, attention to detail, innovation and flexibility of the Modulnova system are at the service of the project, from small and medium supply to large residences.

The Contract division, present at every stage of the project, is a full-service operation for the client and is composed of a team of professionals assisted by an extensive corporate network.

The idea of product customization takes into consideration custom dimensional adaptation, research and introduction of finishes not found in current production, up to complete realization on special design.

The company culture includes a thorough and up-to-date knowledge of all international supply and safety regulations and standards.

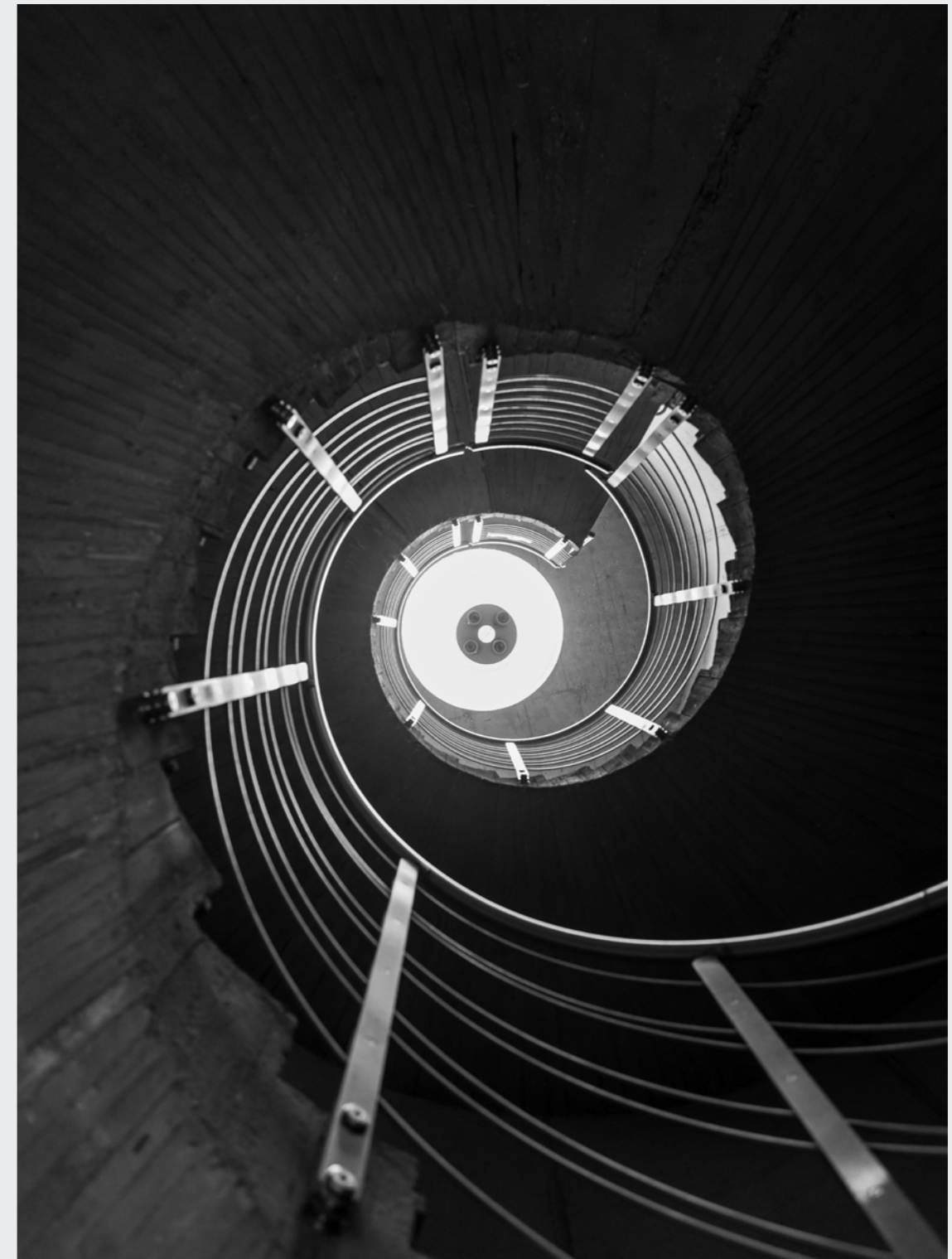
We ensure that we respond specifically to your needs and those of your customers, today and in the future.

MODULNOVA





Established in 1988, Modulnova is the story of a family-run business founded by three brothers, Dario, Giuseppe and Carlo Presotto, which has become a benchmark in the production of kitchen, living, bathroom, outdoor and complementary systems.



The company blends culture and know-how within a state-of-the-art facility—a place of continuous experimentation that places man, his needs and beauty at the center.



Headquarters and production facilities are located on Friulian soil, in Prata di Pordenone, in a total space of 80,000 m² between covered and green areas. Headquarters is the business center where the company showrooms and some production areas are located. Another production site is intended for the realization of special processes, which are the subject of patents. Modulnova is an ever-growing business that employs more than 180 employees and has an induced workforce of 400.

KEYDATES

1996

MOON
actual MH6

2003

Relocation to the new headquarters: 15,000 square meters of covered area in a setting of 40,000 square meters of green space.

2007

FLY
SP29

2011

MODULNOVA LIVING
With the idea of bringing Modulnova style to every area of the home, the company presents its new living collection.

LIGHT

2013

HOME PASSION VOL. 1
First catalog to housing projects.
Modulnova is celebrating its twenty-fifth year of activity.



Modulnova is founded on May 14 by Dario (CEO), Giuseppe (CFO) and Carlo Presotto (CTO).

1988

"The space must be useful and able to make people feel excited, to make them feel good."
Modulnova extends production to the bathroom world and Modulnova Bagni is founded.

2000

INTRODUCTION OF CERAMICS IN THE KITCHEN WORLD.
"We started with porcelain stoneware slabs, then we tried our hand at glass, piacentina stone and cement resin." In 2006, Modulnova became the first company to introduce materials from the world of construction into furniture.

2006

TWENTY RESINA

MODULNOVA MILAN
Opening of the first flagship store in Via Borgogna 7.

2008

BLADE

In 2012, it presents BLADE. Kitchen and living more and more connected, creating an environment in total harmony with the architectural design and volumes. It is the brand's new aesthetic language.

MODULNOVA MILAN
Relocation of the flagship store in Brera, Corso Garibaldi 99.

2012

KEYDATES

2015

MODULNOVA AND THE DESIGN REVOLUTION
Increasingly connected kitchens and living rooms communicate a single aesthetic language, integrating into the volumes and architecture of the space.

2017

Total reorganization of the production system with AUTOMATION processes.

FRAME
SKILL

2019

HOME PASSION DESIGN VOL. 3
& LIVING COLLECTION

2021

HOME DESIGN PROJECT VOL. 1
Creation of the first photo book containing a selection of completed projects representing Modulnova design uniqueness, attention to detail and innovation.

2023

NEW GREEN HEADQUARTER An increasingly sustainable, digitized and high-performance organization. The goal is to improve people's quality of life, including in the workplace.

YACHT
INFINITY
AIR

FLOAT

2014

HOME PASSION DESIGN V.2
MODULNOVA OUTDOOR
Publication of new Home Passion Design Volume 2 catalog and presentation of first Outdoor kitchen.

2016

30
MODULNOVA

Thirtieth year of activity.

2018

BATH COLLECTION
Presentazione di una nuova collezione interamente dedicata all'ambiente bagno.

2020

FRAME LAB
BLADE LAB/BLADE EDGE
FLY GRES
ART
VERTICAL
OUTDOOR

SYSTEM EVOLUTION
Presentazione del primo catalogo OUTDOOR

2022

ART
VERTICAL

EMPATIA
It is a matter of empathy, a force that drives human-centered design innovation. Thoughts, ideas and relationships arise from a deep connection that becomes beauty, experience and belonging.

2024



Present in Italy and around the world with more than 400 outlets including retailers and single-brand stores, the brand is experiencing a moment of strong internationalization.



An aesthetic language related to architecture that is expressed in an exclusive design mood. The design integrates with the architectural space by defining its volumes, in a kind of symbiosis between structure and product.

New materials (such as stoneware, aluminum honeycomb, cement resin) and innovative processing enhance the beauty and performance of the material (oil treatment in woods, raw processing in stones).

A complete synthesis between interior architecture and furniture elements that interprets the most current conceptions of living.





WATCH VIDEO - Milano 2022 Frame Lab



WATCH VIDEO - Milano 2022 Blade Lab/Blade Edge



WATCH VIDEO - Milano 2022 Fly Gres



WATCH VIDEO - Blade Lab



WATCH VIDEO - Bath Collection

CONTRACT DIVISION WORKFLOW

DESIGN SUPPORT TO
THE MODULNOVA DEALER:
KITCHENS - LIVING - BATH - WARDROBES

CUSTOM FINISH SEARCH
AND QUOTATION

FEASIBILITY ANALYSIS AND COSTING
CUSTOM ELEMENTS

PROTOTYPING SPECIAL ELEMENTS

SUPPLYING SAMPLES FOR
THE TENDERING PROCESS

MULTI HOUSING COMMERCIAL
CONTRACT DEFINITION

ORDER ENTRY WITH GRAPHIC
PROGRAM

ORDER CHECK + FINAL DEALER
CONFIRMATION

PRODUCTION PROCESS AND
QUALITY CONTROL

LOGISTICAL SUPPORT

AFTER-SALES MANAGEMENT





London

THE MANSION

Architect
DSDHA

Developer
Clivedale

Main Contractor
McAller & Rushe

Completion
2019

Scope
19 Apartments
Kitchens & Wardrobes









London

THE BIRCHWOOD

Architect
MDC Limited

Developer
Fusion Residential

Main Contractor
MK Refurbishment Limited

Completion
2017

Scope
6 Apartments
Kitchens







London
KINGSGATE

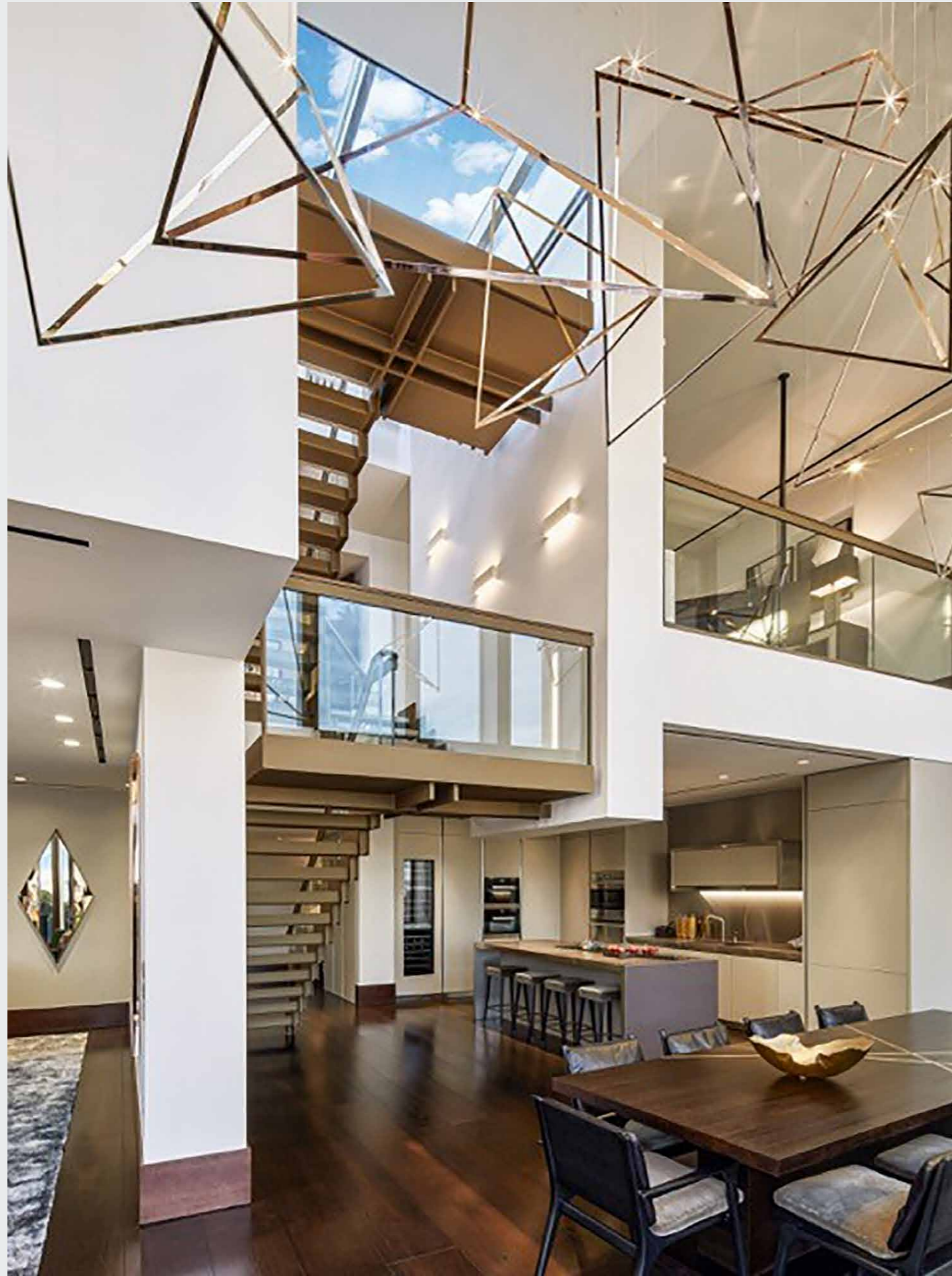
Architect
Lynch Architects

Developer
Land Securities

Main Contractor
Lend Lease

Completion
2017

Scope
**100 Apartments
Kitchens**





London

W1 INTERNATIONAL

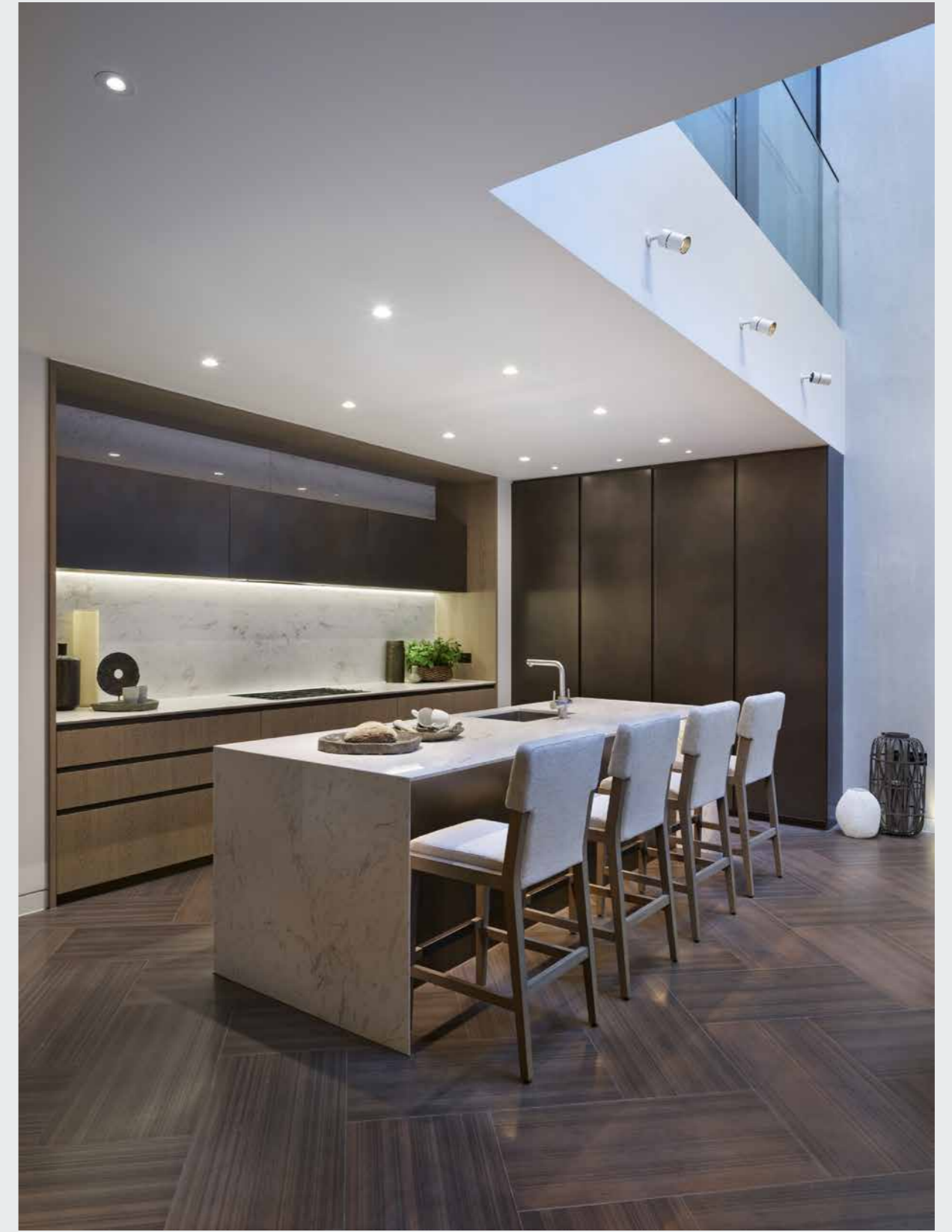
Architect
Darling Associates

Developer
W-One International

Main Contractor
Walter Lilly

Completion
2019

Scope
19 Apartments and 4 Townhouses
Kitchens & Utility Rooms





Treviso

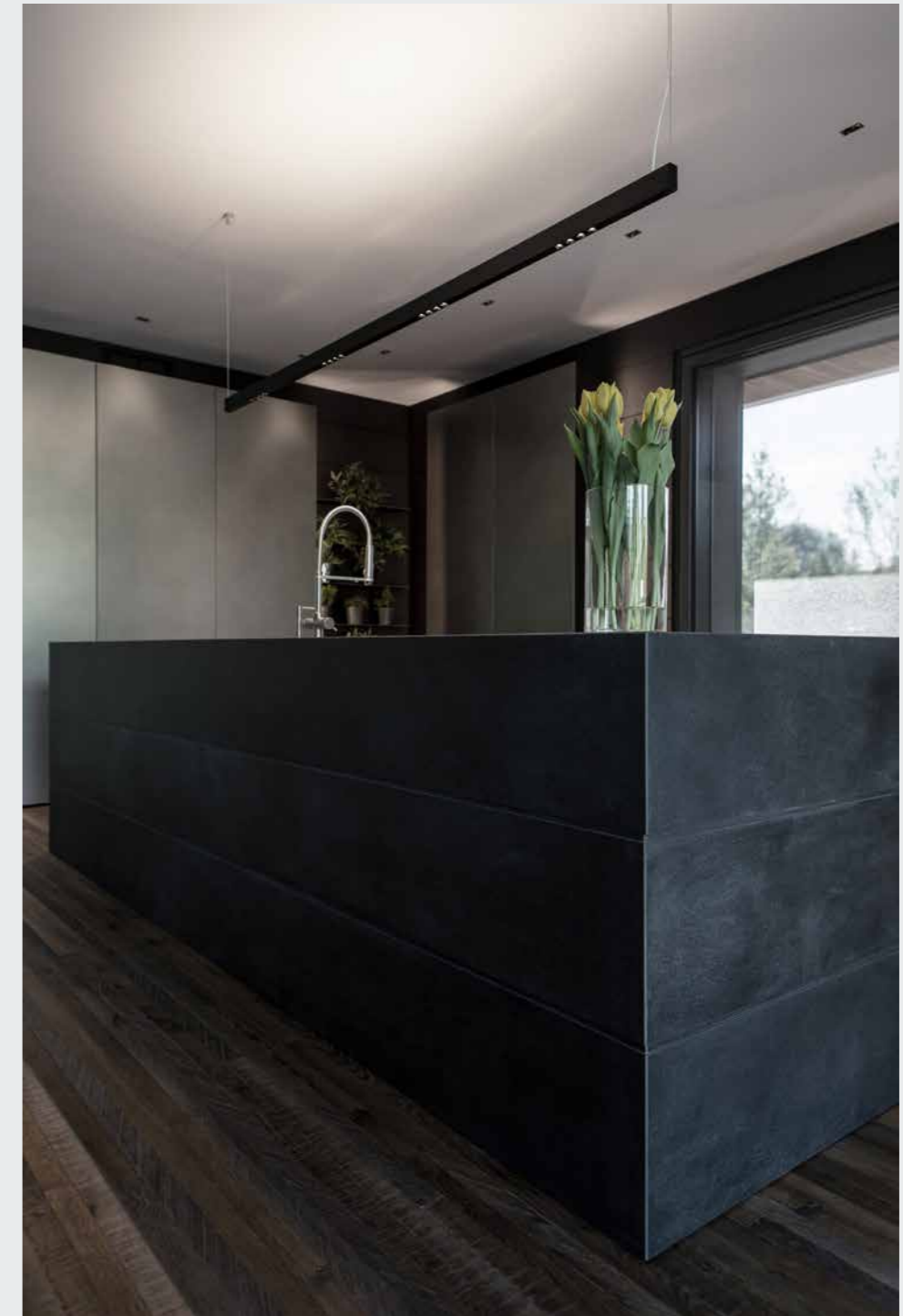
CA' DELLE ALZAIE

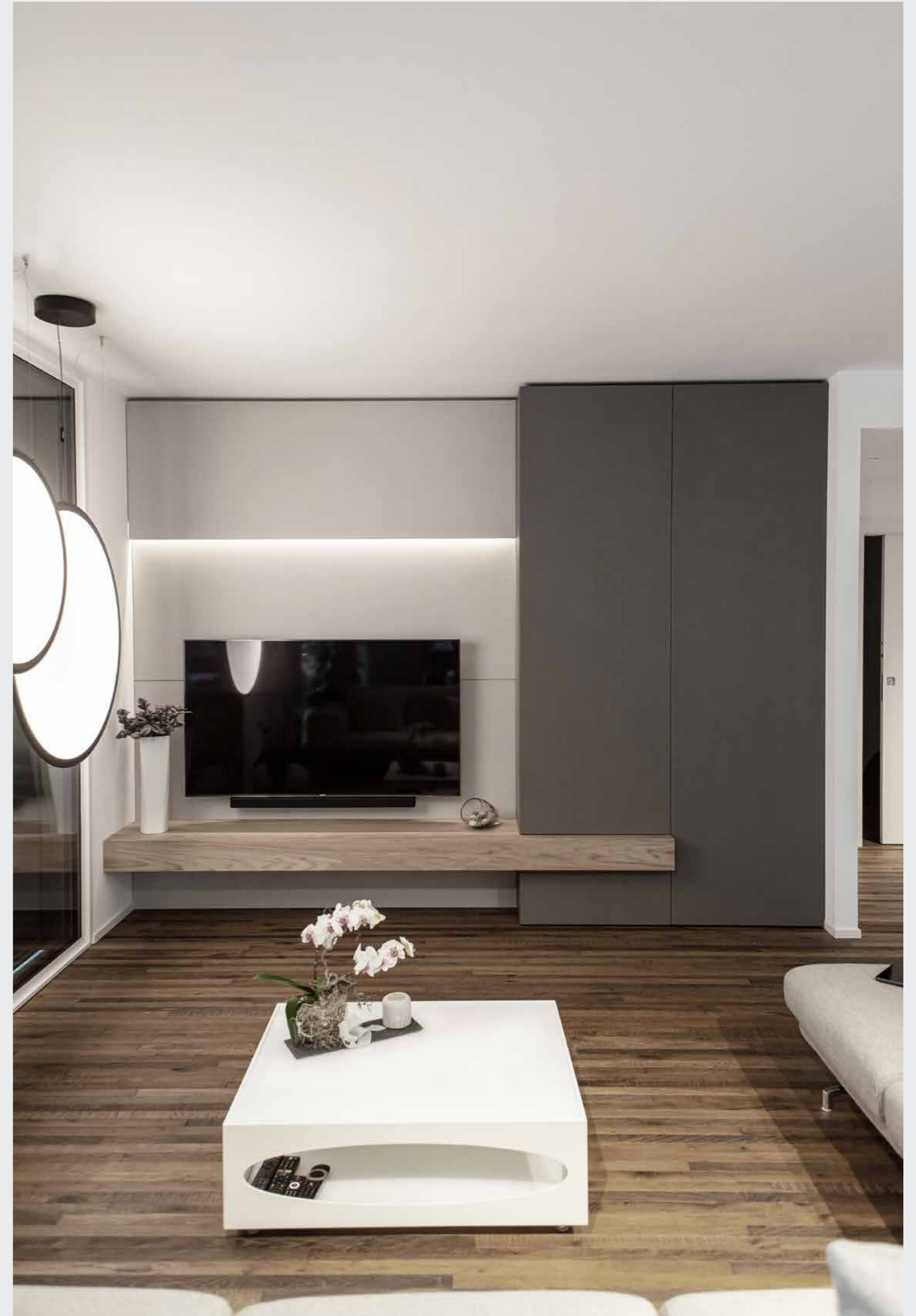
Architect
DF Arredamenti

Completion
2020

Scope
10 Apartments
Kitchens









Shanghai
THE ARCH PHASE 3

Architect
Wong & Tung International

Developer
Sun Hung Kai

Main Contractor
Guang Zhou Zhu Jiang

Completion
2023

Scope
204 Apartments
Kitchens







Ibiza

THE WHITE ANGEL TALAMANCA

Architect
The White Angel Talamanca

Developer
The White Angel Talamanca

Main Contractor
OD-Group

Completion
2017

Scope
57 Apartments
Kitchens







London

THE ARTISAN

Architect
Rolfe Judd

Developer
Dukelease

Main Contractor
Ernest Park

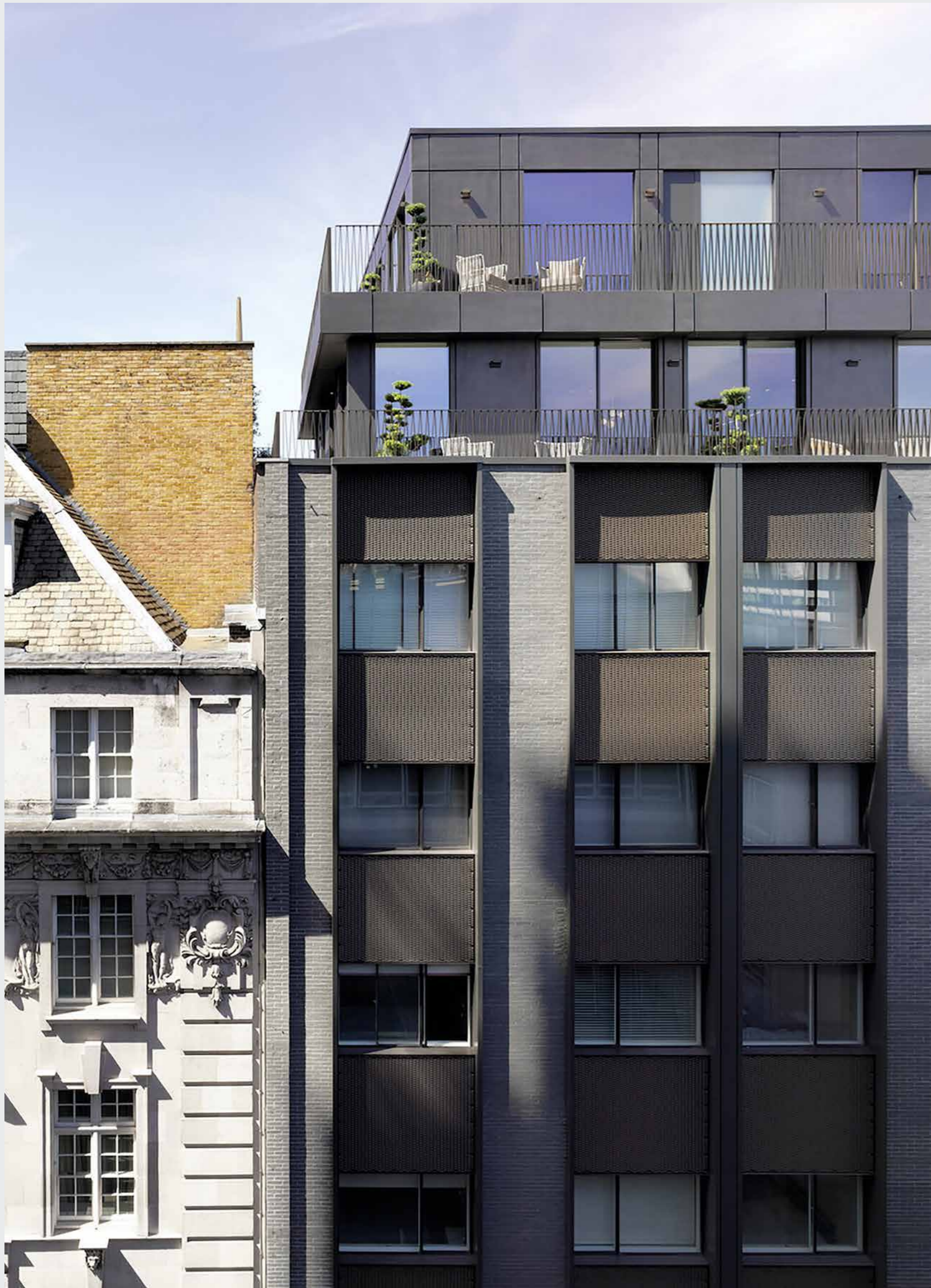
Completion
2015

Scope
13 Apartments
Kitchens









London

THE VABEL PORTLAND

Architect
Design Space London

Developer
Vabel

Main Contractor
Vabel

Completion
2020

Scope
4 Apartments
Kitchens





London

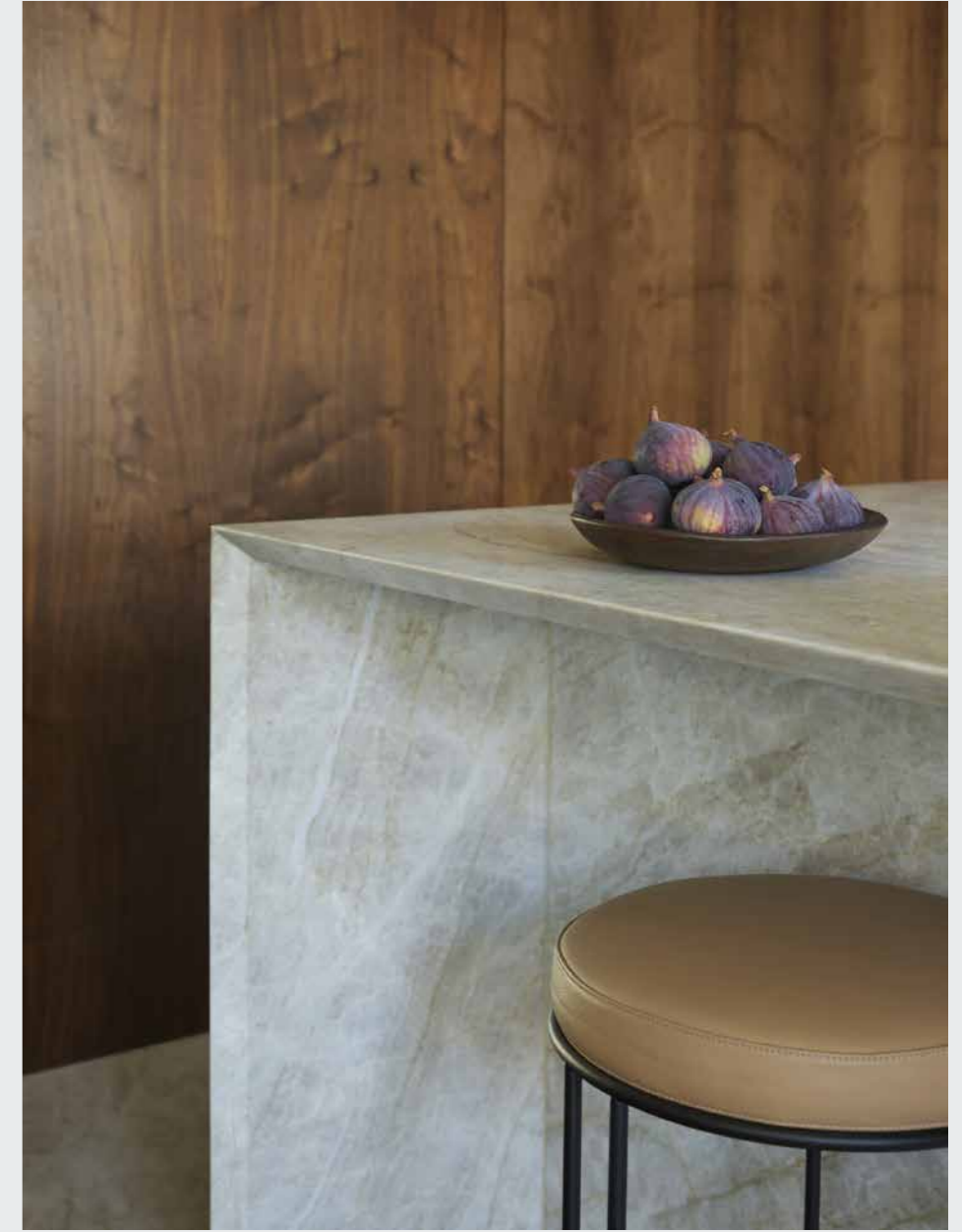
UPPER WIMPOLE STREET

Developer
Vabel

Completion
2019

Scope
2 Apartments
Kitchens







Hong Kong
VILLA LUCCA

Architect
Modulnova Hong Kong

Developer
Hysan

Completion
2022

Scope
57 Apartments
Kitchens





Seoul
ATID DAECHI

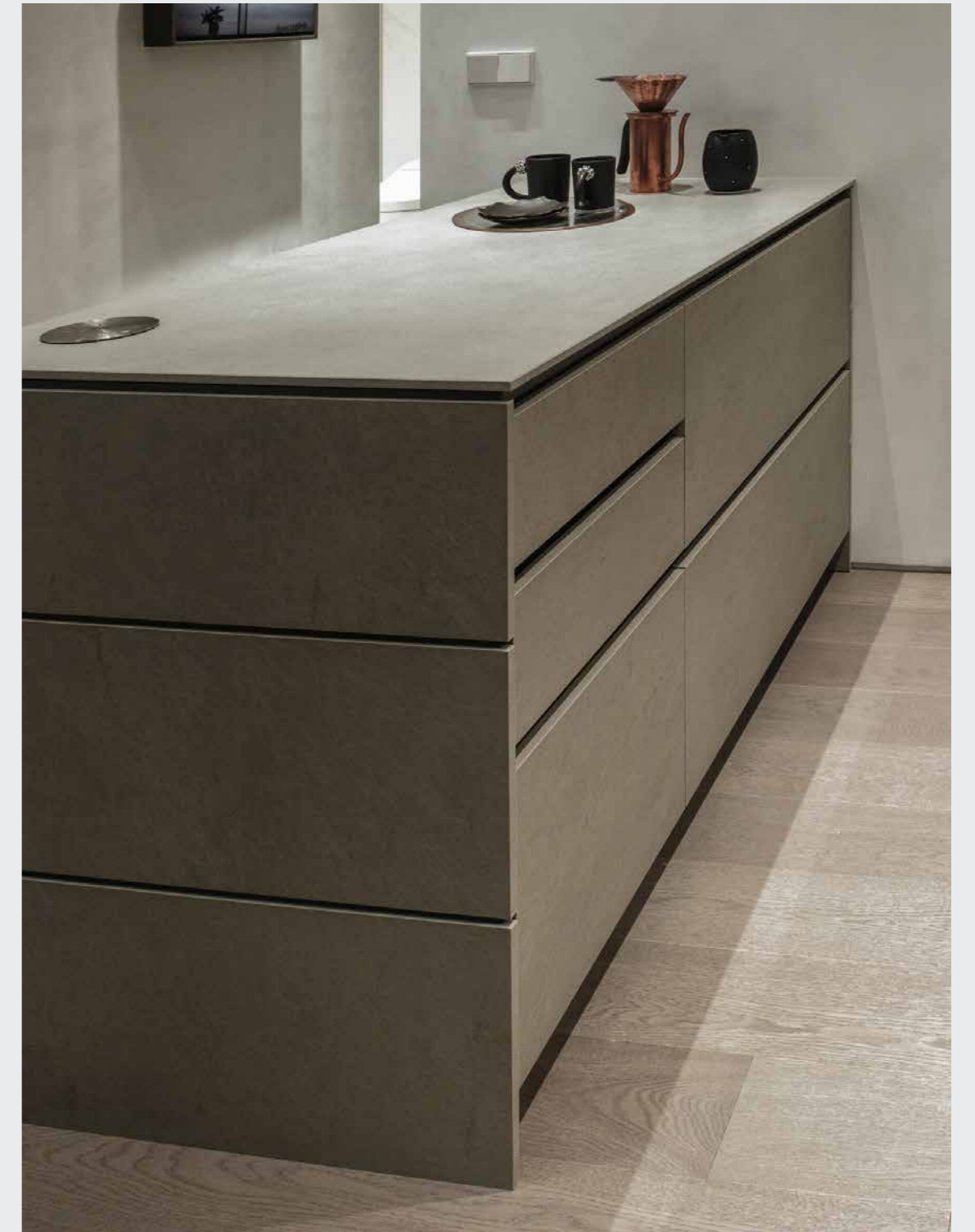
Architect
Lynch Architects

Developer
Haanong

Completion
2023

Scope
86 Apartments
Kitchens







Palma de Mallorca

CAN SANTACILIA

Architect
Ohlab

Developer
Espacio Home Design

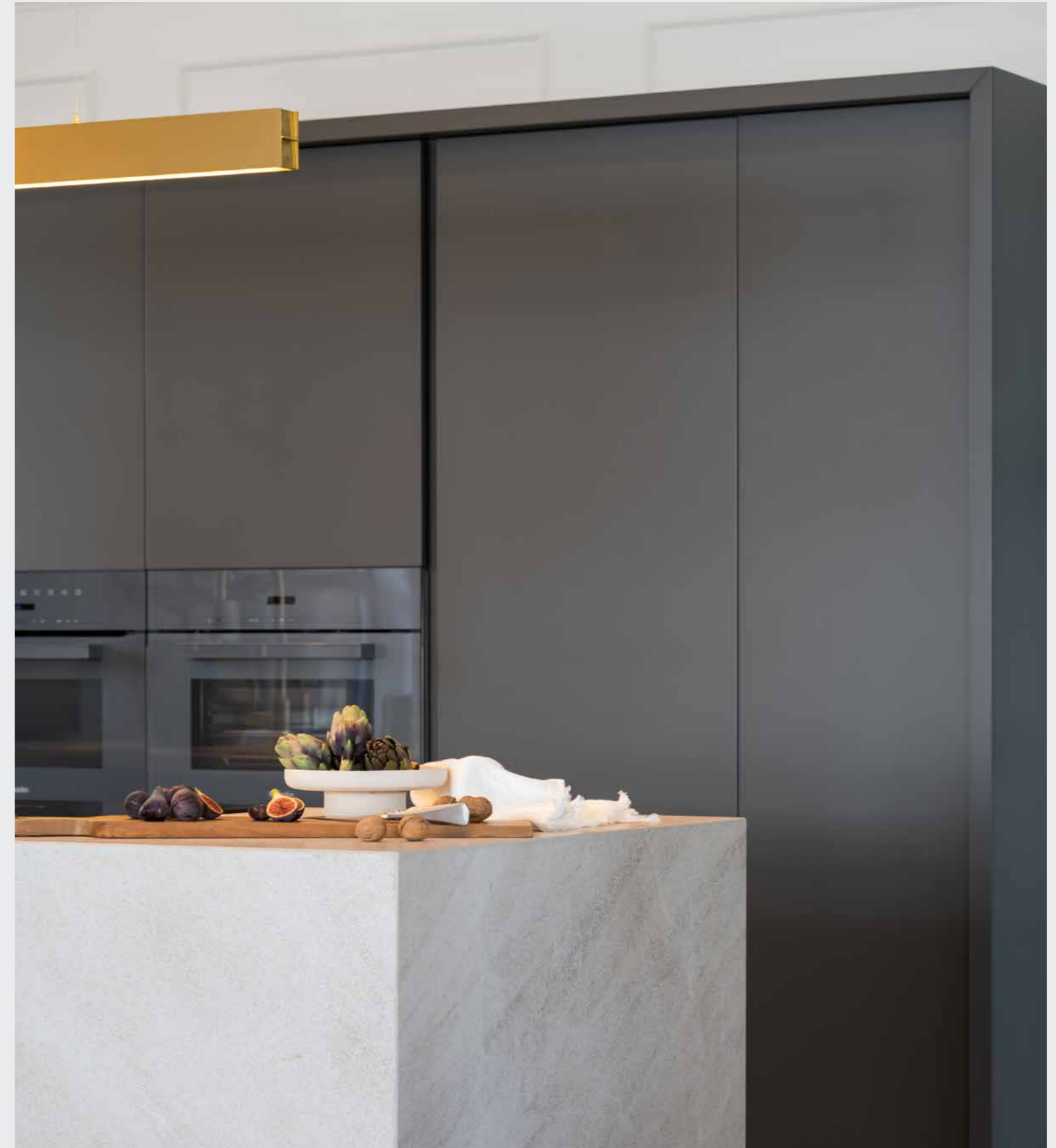
Completion
2022

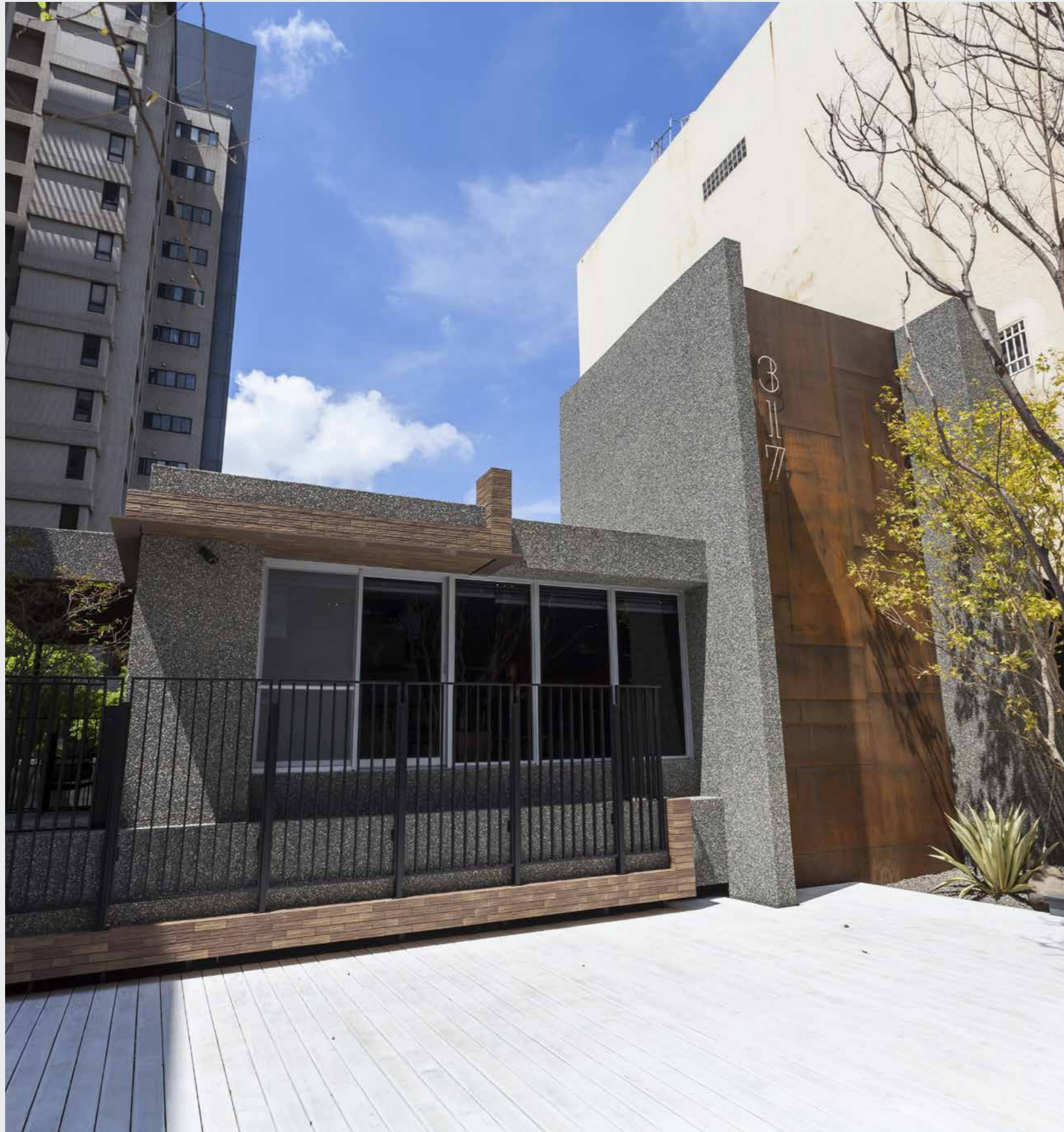
Scope
15 Units
Kitchens











Taiwan
ZHI CHIANG

Architect
ABO Chian Ho Co.

Developer
Grand Construction

Main Contractor
Grand Construction

Completion
2023

Scope
42 Units
Kitchens







Egham

MAGNA CARTA PARK

Architect
Royalton

Developer
Julian Bicknell & Associates

Main Contractor
Midgard

Completion
2021

Scope
57 Houses and apartments
Kitchens



